

## WVO Designs – Monster Pump Reversible Switch [support@wvodesigns.com](mailto:support@wvodesigns.com) 843-972-4211

*Yes, you can wire in an extra switch reverse the flow direction of your WVO Designs Monster Pump.*



Parts/ tools needed:

(1) On/On DPDT switch (part number [7343K793](#) with quick connect terminals from McMaster-Carr)

(6) x 14-16 gauge quick disconnects, female, insulated



½" Metal drill bit

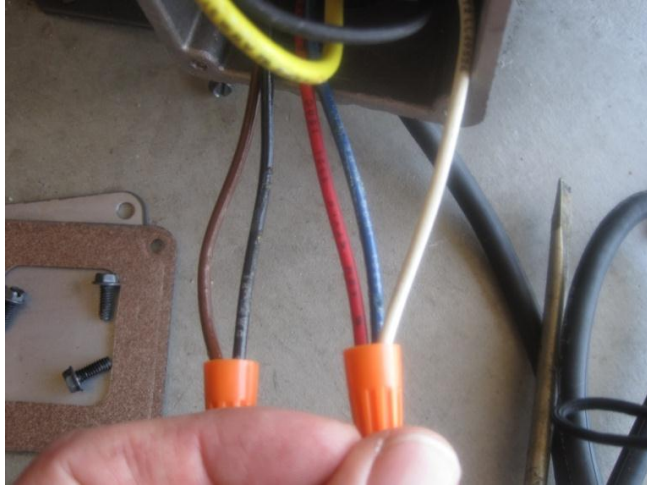
Wire stripper/crimper

Needle nose pliers

Silicone sealant

2 x wire nuts

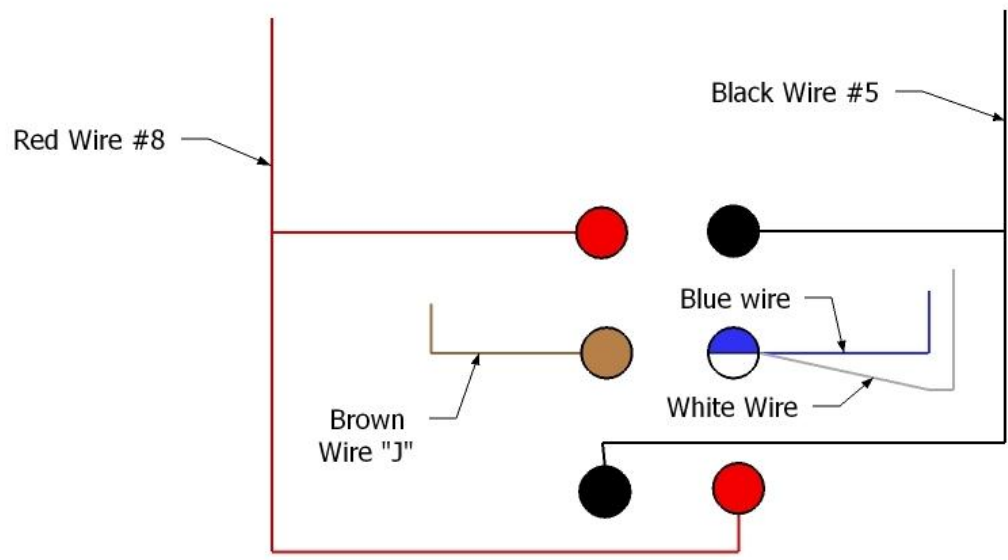
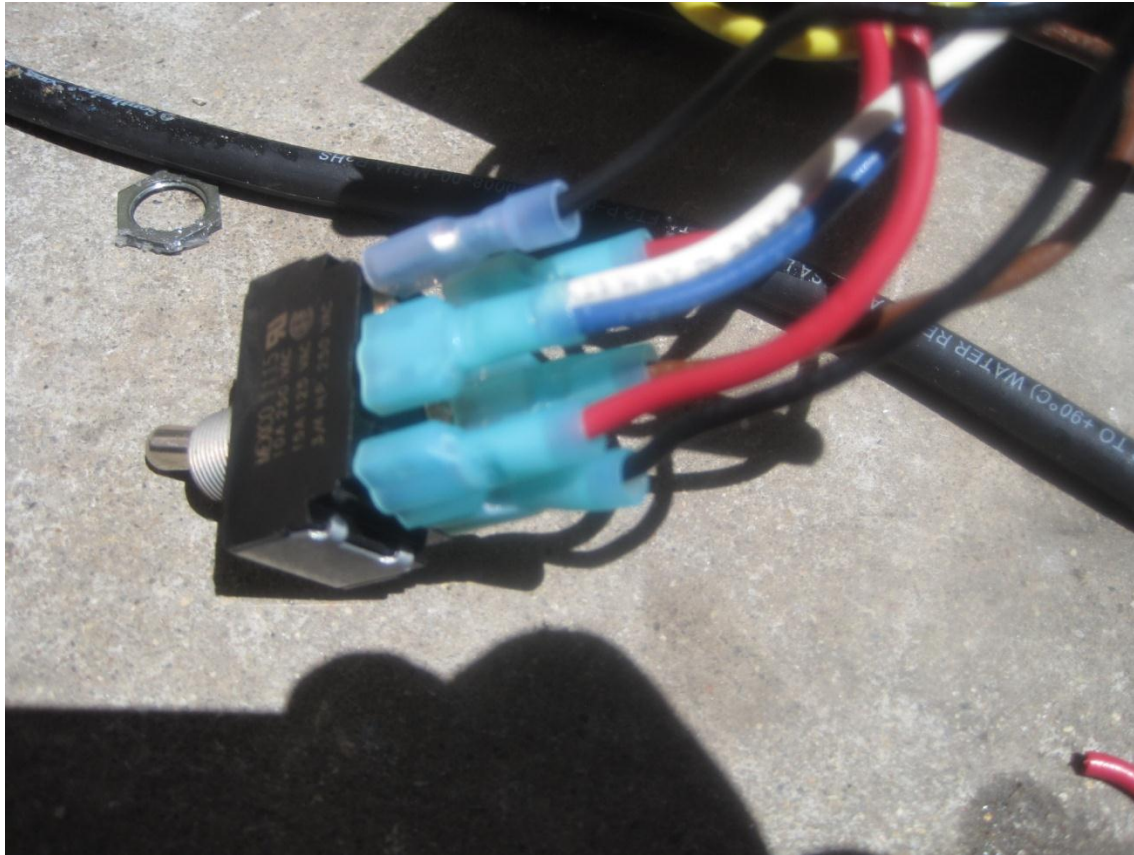
4 x short pieces of ~14 gauge wire.



Switching the red #8 and brown #5 wires will reverse the rotation of the motor. This will be done through an extra added switch.



Take out the existing switch. Be sure to mark on the on/off switch which direction on the switch is on because the reference plate will be removed. Drill two new  $\frac{1}{2}$ " holes for the switches. Make sure you measure in enough from the sides to leave just enough room for the switches.

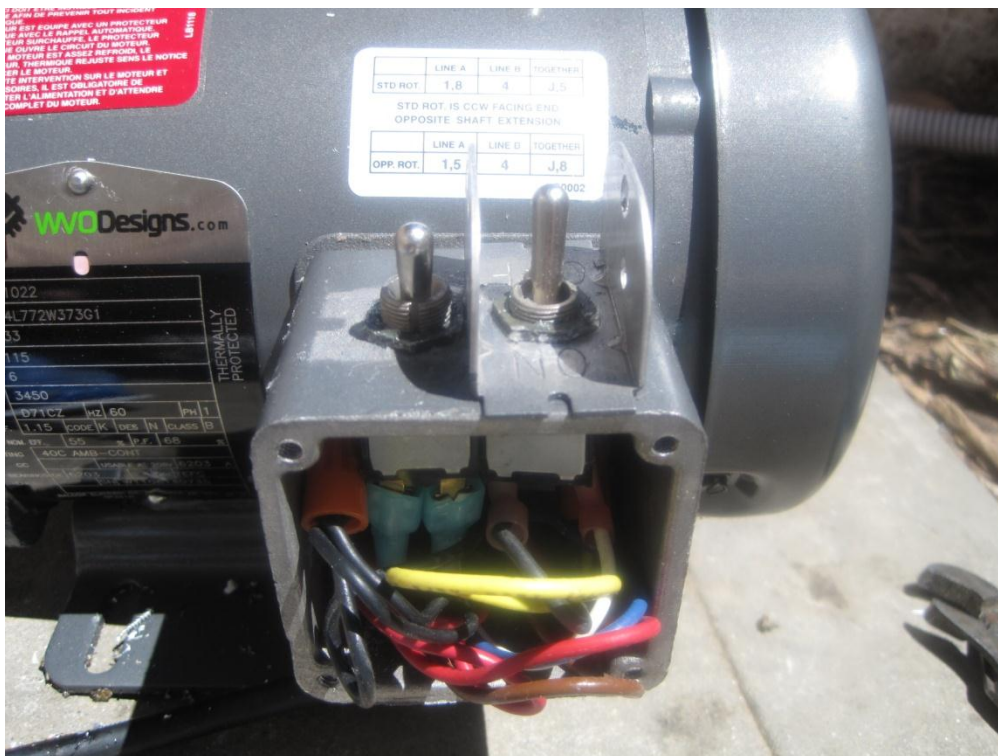


Monster Pump Reversible switch wiring. On-on toggle DPDT switch

Then, reconfigure the wiring and attach to the new/second switch as shown below. The connections on the original on/off switch will stay the same. Leave them alone.



Next, work the switches into position and add some silicone sealant for weatherproofing



Now add the on/off plate and nut. Don't scrunch up the wires too much that you knock loose the connections. There is room for everything, just pack carefully. If you lost track of which direction is on by moving the switch to get it back in place, you can use a connectivity test on the plug to tell which direction is on.



**\*\*Note:** Do not reverse the pump while it is on. Make sure you turn it off before you change the direction. You are working with 120v wiring. Make good connections, make sure the pump is unplugged and ask for help if you are uncertain.