

## SPECIFICATIONS

Dimensions: 21" W X 21" D X 67" H. (Adjustable Height +/- 2")

Weight: 325 Lbs (empty)

Capacity: 50 Gal oil yields 50 Gal finished Biodiesel  
10 gal Methanol yields 10 gal glycerin

Construction: TIG welded 304 stainless steel body  
Powder coated carbon steel covers

Fittings: 304 stainless steel or glass filled polypropylene

Electrical: 110 V AC / 15 Amps / 50-60 Hz

Controls: AUTO mode via programmed logic controller  
"Start" button initiates completely automated process  
Manual mode controlled by switch actuation

Reaction: Acid-catalyzed free fatty acid esterification  
Base-catalyzed triglyceride transesterification

Wash: Triple stage turbulent water wash and removal

Timing: 48 hours from start to finish

Materials: Filtered Organic Oil, Methanol, Sulfuric Acid, Potassium Hydroxide (KOH) or Sodium Hydroxide (NaOH),  
Fresh water (preferably soft)

**PURCHASE PRICE**  
**\$8395 +**  
**TAXES & SHIPPING**

Allow 3 weeks for delivery.

F.O.B. Chico, California 95928

## ADDITIONAL INFORMATION

For more information on how to purchase a BioPro 190 Automated Biodiesel Processor including additional pictures, videos, technical information, how the machine works and more, be sure to stop by our website.

Visit us on the web at :

<http://www.utahbiodieselsupply.com>

Or Call To Arrange A Free  
Demonstration At Our Facility

(801) 820-5753

*(We'll even let you bring your own oil!)*

**TO PURCHASE A  
BioPro 190  
AUTOMATED BIODIESEL PROCESSOR,  
CONTACT UTAH BIODIESEL SUPPLY  
TODAY!**



**U  
B  
S** **UTAH  
BIODIESEL  
SUPPLY**

**WWW.UTAHBIO.COM**  
**(801)820-5753**

**INTRODUCING  
THE BioPro 190  
AUTOMATED BIODIESEL  
PROCESSOR**



**MAKES BIODIESEL  
FOR LESS THAN \$1/  
GALLON FROM USED  
FRYER GREASE!**

- SIMPLE PRESS BUTTON OPERATION
- INDUSTRIAL GRADE BUILD QUALITY
- FUEL VEHICLE RIGHT FROM MACHINE
- MAKES 50 GALLONS EVERY 48 HOURS
- BIODIESEL RUNS IN ANY DIESEL
- ENVIRONMENTALLY FRIENDLY FUEL
- SAVES ON FUEL BILLS & BOTTOM LINE
- FAST RETURN ON INVESTMENT

## WHY BIODIESEL?



- You can make it for under \$1.00 a gallon!
- Creates independence from fuel prices
- Will run in any diesel engine\*
- Helps lengthen the life of the engine\*\*
- It's better for the environment than diesel
- It's a renewable energy source
- It helps add to your bottom line

### Did You Know?

When the diesel engine was first invented by Rudolph Diesel, one of his goals was to create an engine that could run on several different fuels. In 1900 at the Paris Exposition one of Diesel's engines actually ran on Peanut Oil!

Any Diesel engine can easily run on Biodiesel without modification to the engine. They were **DESIGNED** that way!

\* When properly blended. See engine owners manual for exact blending specifications. Older engines may need to upgrade fuel line seals.

\*\* Biodiesel burns cleaner and has higher "lubricity". Both of which have been shown to lengthen engine life when used in a diesel engine.

## THE BIOPRO 190 AUTOMATED BIODIESEL PROCESSOR



This state-of-the-art system is incredibly easy to use. Just add 50 gallons of oil and the additional ingredients, press the start button and just 48 hours later you'll have 50 gallons of clean, crystal clear, usable Biodiesel!

It even comes with it's own 12 GPM filling pump. It's like having your very own gas station!

### PUSH BUTTON OPERATION



The BioPro 190 is extremely easy to use. The unit comes with a programmed logic controller that controls every aspect of the machines operation.

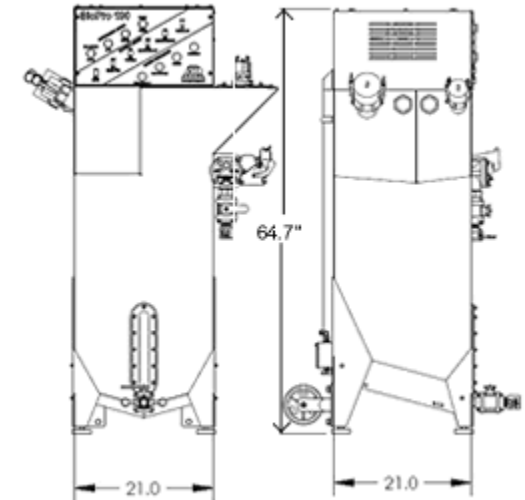
- **No Chemistry, No Titrations, No Measuring!**
- **Just Add Ingredients & Push The Start Button**

### MINIMUM REQUIREMENTS

- 50 gallons of new or waste vegetable oil.
- 10 gallons high-grade, high purity methanol
- 1520 g Sodium Hydroxide or 2350 g Potassium Hydroxide
- 190 mL high grade Sulfuric Acid (93% or better purity)
- 50 gallons of clean, fresh water
- (2) 55 gallon containers for water in & water out

## THE BIOPRO 190 MADE TO LAST

The BioPro 190 is built using high quality, industrial grade materials to bring you years of use. Designed with 24/7 operation in mind, the BioPro 190 is ready for "heavy use" With a completely Stainless Steel tank, chemically resistance pumps, heavy duty locking input shafts, a massive mixer and sealed electronics it's the ideal solution for producing Biodiesel.



### SCHEDULE A DEMO TODAY!

If you'd like to see this amazing machine in action, contact Utah Biodiesel Supply to schedule a free informative demonstration of the machine in action. You'll have a chance to see just how easy it is to operate a BioPro 190 and even see the finished Biodiesel it produces. Demonstrations fill up fast, so be sure to call today!

**UTAH  
BIODIESEL  
SUPPLY**  
WWW.UTAHBIO.COM  
(801)820-5753