

Making Biodiesel With the BioPro 190



Step 1 Pour or pump in the oil to be processed. The fill line inside marks 50 gallons.



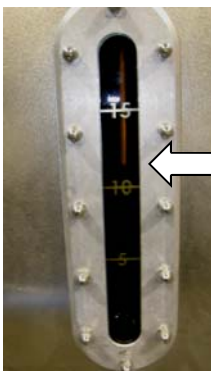
Step 2
Pour in base catalyst (NaOH or KOH)



Step 3
Pour in methanol. Correct levels shown in sight glasses.



Step 4 Press the big green REACTION START button, and come back in 24 hours for Step 5.



Step 5 Drain off glycerin through ball valve.



Step 6 Press the big blue WASH START button, and come back in 24 hours for 50 gallons of ready to use biodiesel.